



Harbor Technical Advisory Committee

Updates to TAC and MIC Board

Mike Wenholz

March 19 & 20, 2024

HTAC Quarterly Meeting

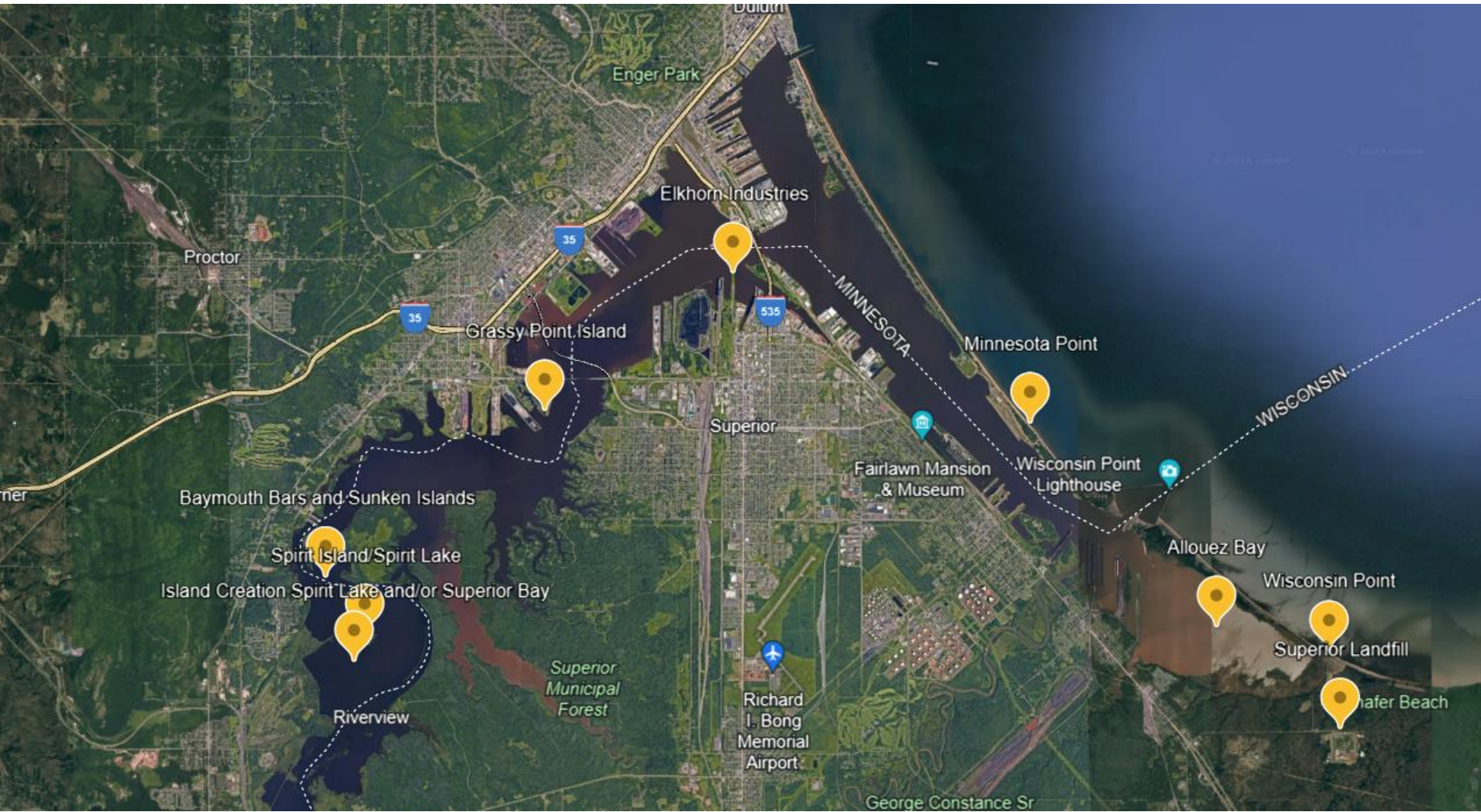
- Continue to be held as “Hybrid” meetings (in-person with a virtual option)
- Well-attended - 51+ participants (while overlapping with the start of the St Louis River Summit)
- Good variety of topics presented
- Quality presentations
- Lengthy and informative Roundtable

Image credit: Madison Rodman/MNSG



IDENTIFYING BENEFICIAL USE PRIORITIES FOR DREDGED MATERIAL FROM THE PORT OF DULUTH-SUPERIOR

WORKSHOP SUMMARY
Kelsey Prihoda, Minnesota Sea Grant



Proctor

Enger Park

Elkhorn Industries

Grassy Point Island

Superior

Fairlawn Mansion & Museum

Minnesota Point

Baymouth Bars and Sunken Islands

Spirit Island/Spirit Lake

Island Creation Spirit Lake and/or Superior Bay

Riverview

Superior Municipal Forest

Richard I. Bong Memorial Airport

George Constance Sr

Allouez Bay

Wisconsin Point

Superior Landfill

Hafer Beach

MINNESOTA

WISCONSIN

35

35

535

ner

Duluth



By the Numbers: 2023

Jayson Hron | communication and marketing director



duluthport.com

2023 Highlights of a Good Year for the Port

- Most vessel arrivals since 2018
- Season-over-season tonnage increases across 8 cargo categories
- Iron ore tonnage up 14.3% from 2022 – highest single season since 1995
- Cement up 29% from 2022 and 31.1% above the 5-season average
- Longest international season ever – 277 days
- New trans-Atlantic monthly liner service started – first since the late 1970's
- 11 visits from cruise ships
- 8 ships wintering in the port – most since 2016-17



1ST

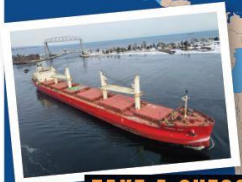
ARRIVAL of the new trans-Atlantic monthly liner service from Spliethoff linking Antwerp, Belgium, and the Duluth Cargo Connect facilities.



The most since 2018. **775** VESSEL ARRIVALS

GLOBAL CONNECTIONS

KEY: ■ import ■ export



TAKE A GUESS

9,273

ENTRIES for the 40th annual First Ship contest, sponsored by Visit Duluth.



The longest international shipping season in port history.



8

The most since 2016-17.

SHIPS WINTERING in the Port of Duluth-Superior.



DULUTH DELIVERS

33,930

SHORT TONS OF WHEAT loaded aboard the CSL Welland during a stop at Superior's Vittera Connors Point elevator—the largest single-ship grain load in Twin Ports history.

80

FEET, the length of a revolutionary European tractor making its North American debut after sailing to Duluth.

21.5m

SHORT TONS OF IRON ORE shipped from Duluth-Superior.

11

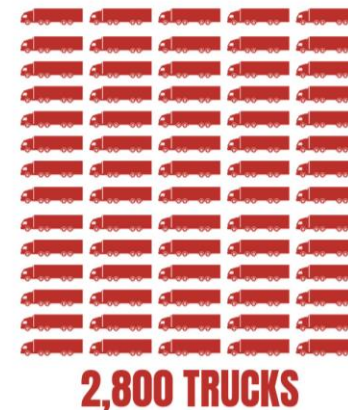
VISITS FROM CRUISE SHIPS, including Duluth's first four turnaround visits.



Additional 2023 Port Updates

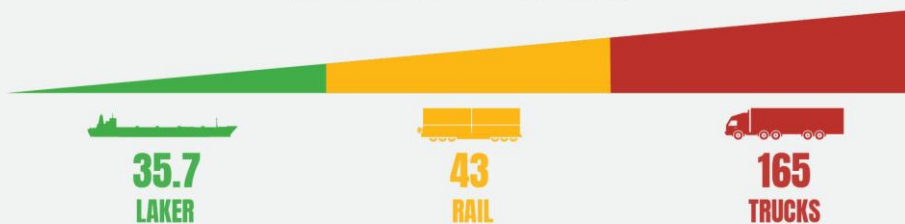
- Grain was up 22.5% from 2022, but 29% below the 5-season average
- Coal continues steep decline - 22% below 2022 & 28% below the 5-season average
- Coal has dropped from 22 million tons in 2005 to 5 million tons in 2022
- Moving cargo via ship remains a more energy efficient freight option (compared to truck and rail)

CARRYING 70,000 TONS OF BULK CARGO REQUIRES



CARBON INTENSITY

(lbs of CO2/1,000 ton-miles)



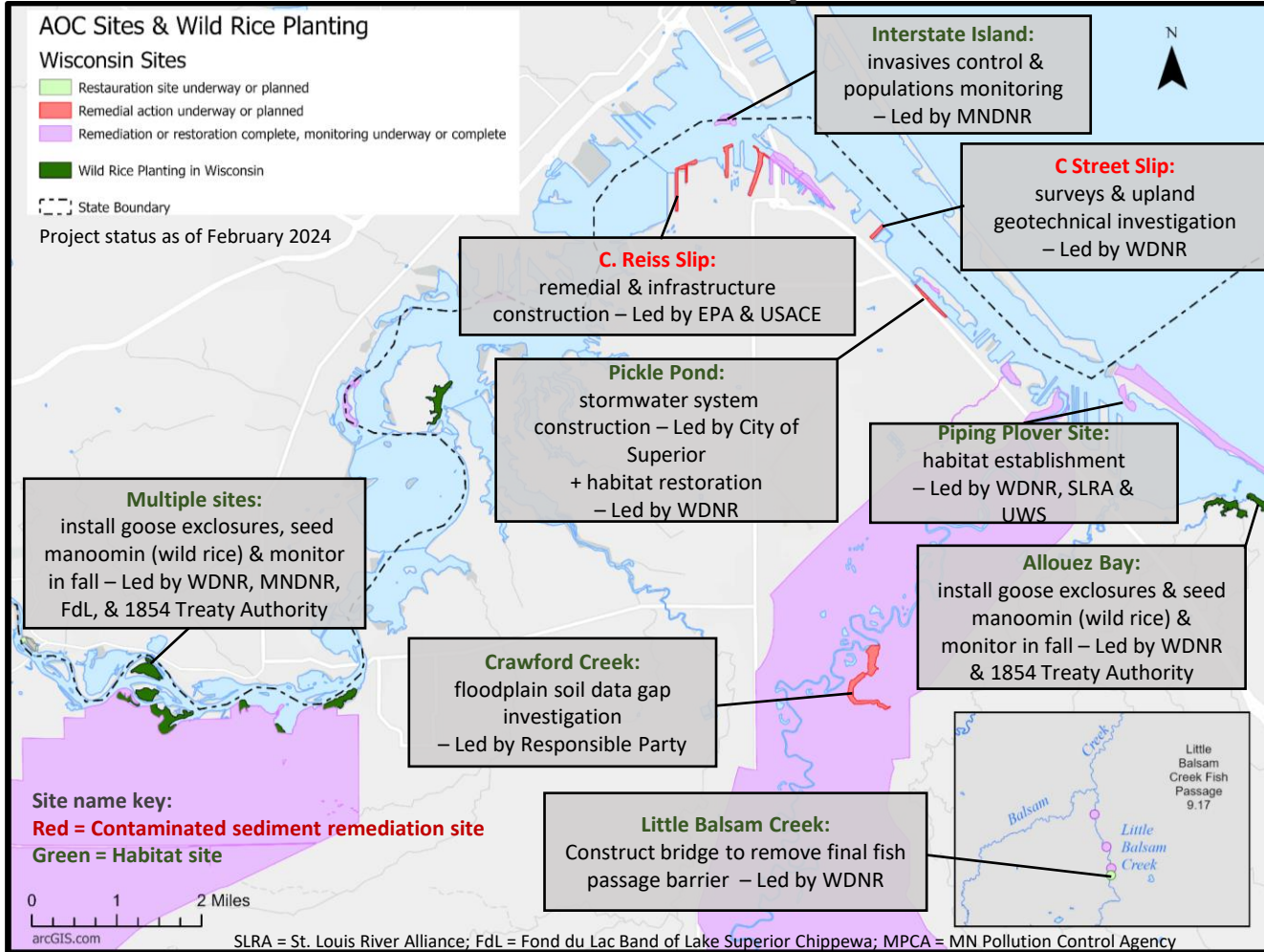


HTAC dredging subcommittee

March 2024

Chair Dan Breneman - MPCA

St Louis River Area of Concern – Anticipated 2024 Field Work in WI



For more information or to request a project tour or presentation, please contact:



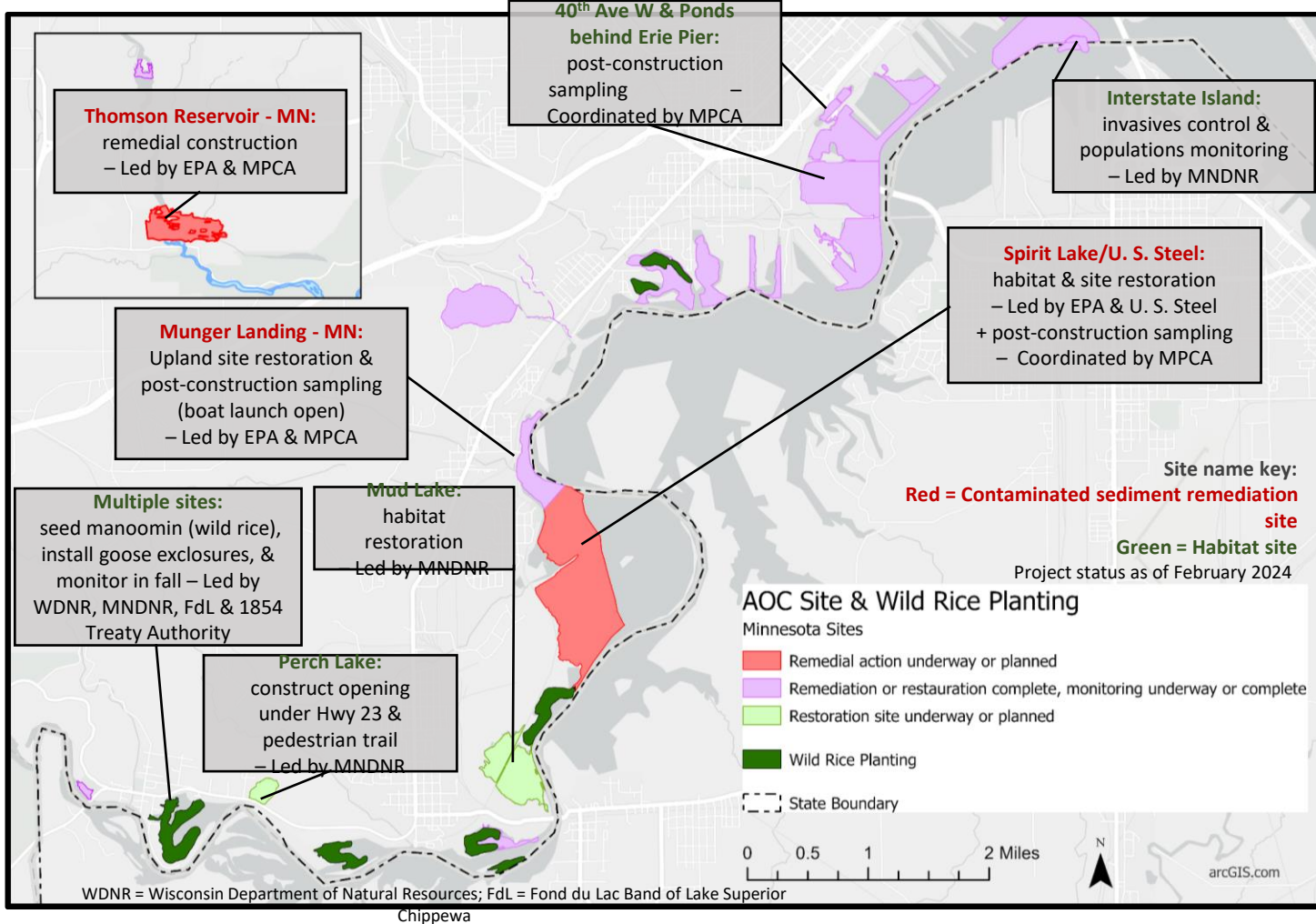
WI Dept of Natural Resources (WDNR)
Matt Steiger
Area of Concern Coordinator
715-395-6904
Matthew.Steiger@wisconsin.gov

Primary funding support is provided by the federal Great Lakes Restoration Initiative and administrative oversight is provided by the Environmental Protection Agency (EPA).



February 2024

St Louis River Area of Concern – Anticipated 2024 Field Work in MN



For more information or to request a project tour or presentation, please contact:



MN Pollution Control Agency (MPCA)
Barb Huberty
Area of Concern Coordinator
218-302-6630
Barbara.Huberty@state.mn.us



MN Dept. of Natural Resources (MNDNR)
Melissa Sjolund
Area of Concern Coordinator
218-302-3245
melissa.sjolund@state.mn.us

Primary funding support is provided by the federal Great Lakes Restoration Initiative and administrative oversight is provided by the Environmental Protection Agency (EPA).



February 2024



**U.S. COAST GUARD
MARINE SAFETY UNIT
DULUTH
UNIT OVERVIEW**



Sector Commander Authorities

Marine Safety Unit Duluth

FOSC

FMSC

OCMI

COTP

SMC



**Federal On
Scene
Coordinator**

**Federal
Maritime
Security
Coordinator**

**Officer In
Charge
Marine
Inspection**

**Captain
of the
Port**

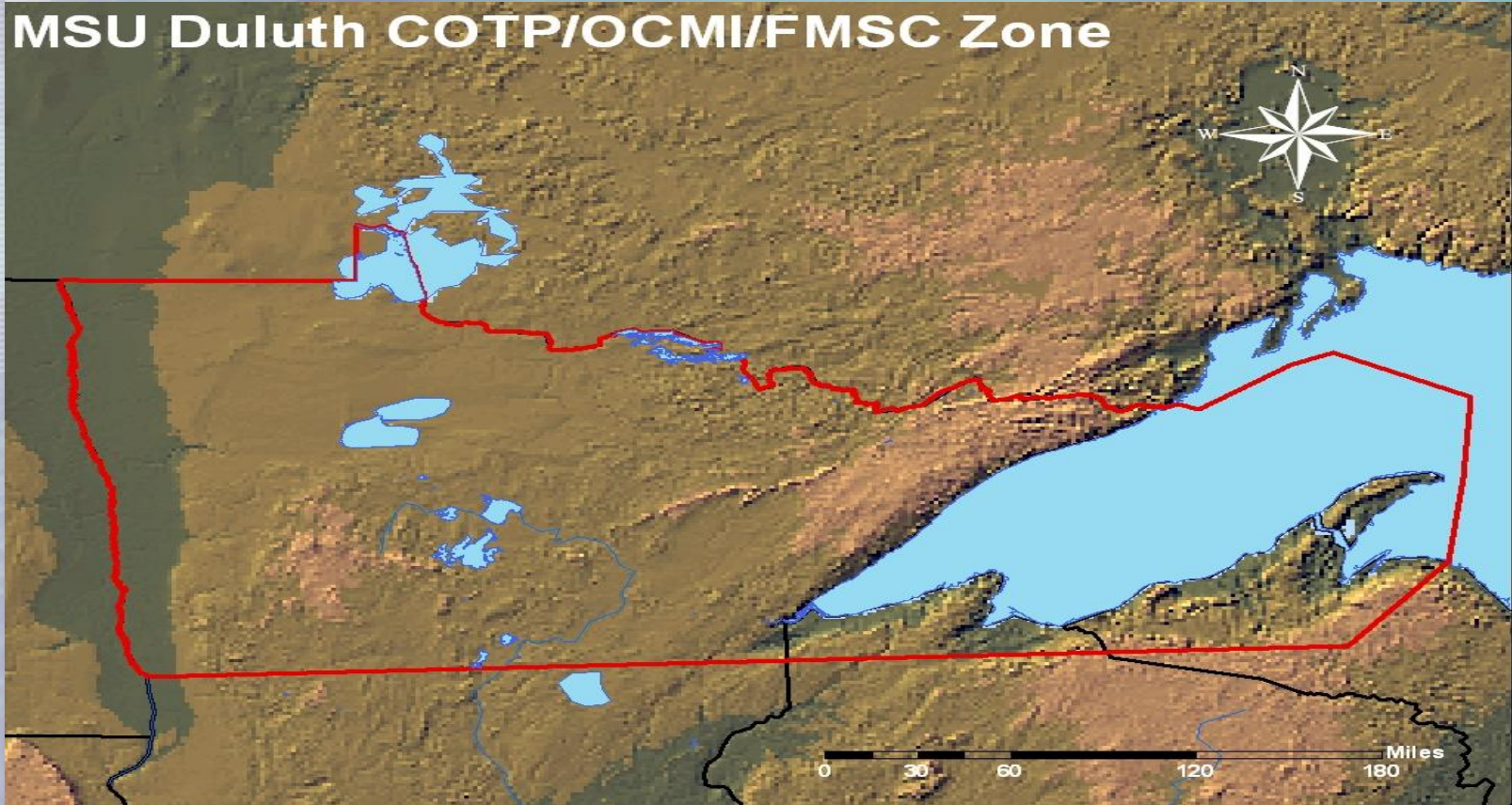
**Search &
Rescue
Mission
Coordinator**

Source: Ogle
(2013)

Captain of the Port Zone



MSU Duluth COTP/OCMI/FMSC Zone



MIC's Harbor Work Plan

- HTAC remains very important to the MIC
- 2024 Budget for Harbor Planning = \$55,600
- 2024 budget includes 775 staff hours
- Harbor Work Plan continues to include 3 components
 - Coordination, information exchange, & group facilitation (HTAC meetings)
 - HTAC Subcommittee facilitation & coordination
 - Program development & other activities (diverse list of activities)

Ongoing HTAC Tasks

- Updating the voting member list
 - Retirements and a remaining opening
- Need to fill the Vice Chair position
- Remain a conduit of harbor-related happenings and information to a diverse group of stakeholders
- Re-establishing proper functioning of Subcommittees

Questions???

Contact:

Mike Wenholz

Duluth-Superior Metropolitan Interstate Council

218-529-7573

mwenholz@ardc.org