

# 6<sup>th</sup> Avenue East Overlay and Roadway Reconfiguration

Alex Popp, PE – Project Engineer

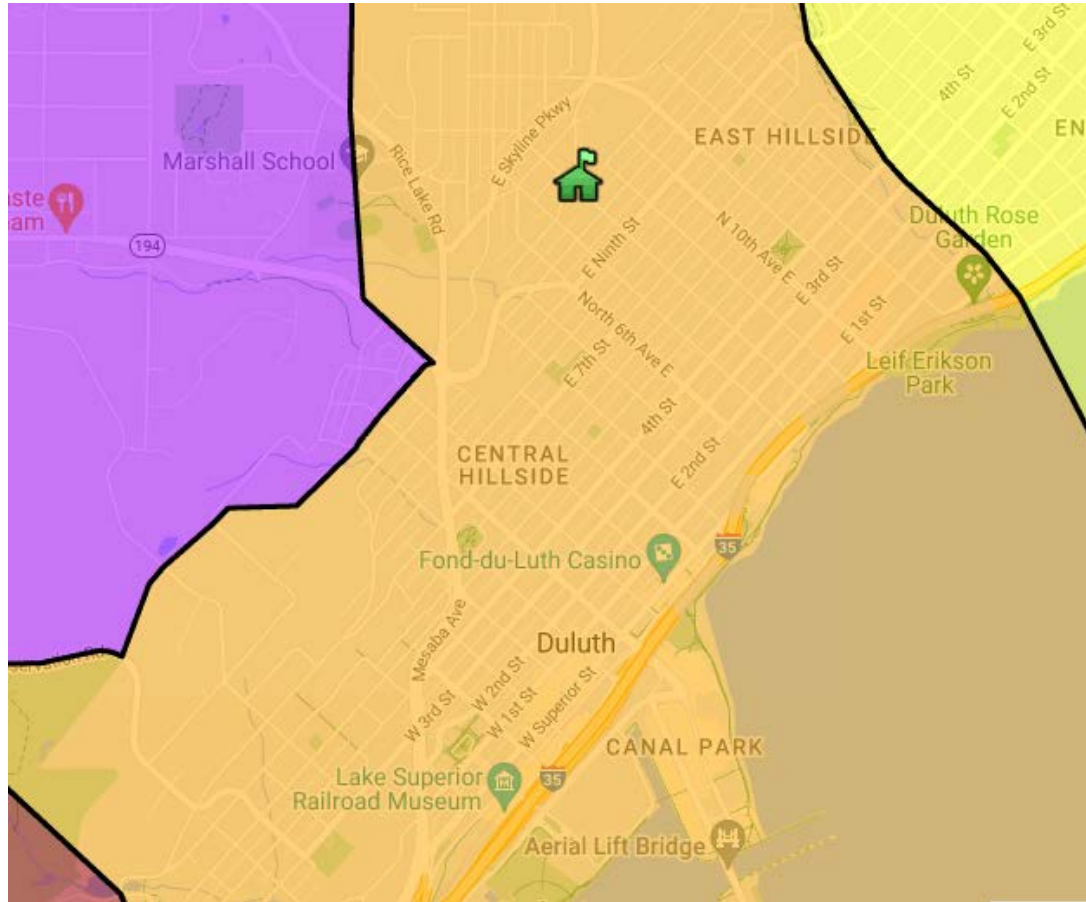
James Gittemeier, AICP – Senior Transportation Planner



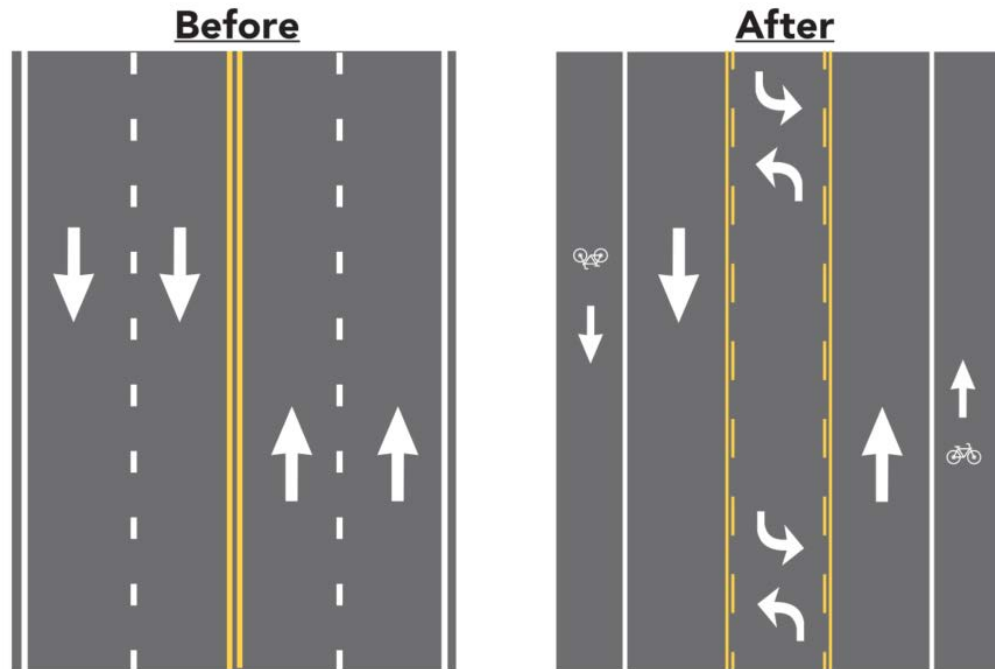
# Project Overview



# Current Challenges Posed by Roadway



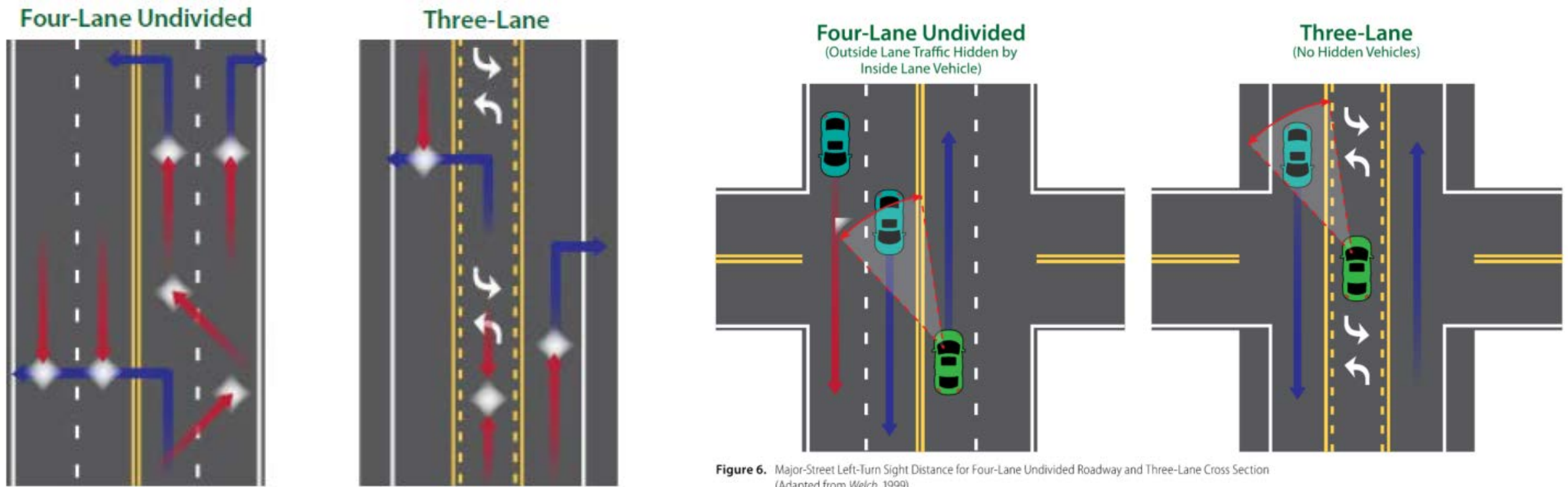
# 3-Lane Roadways in Duluth



Two travel lanes are removed to reallocate space for a TWLWL and bicycle lanes.

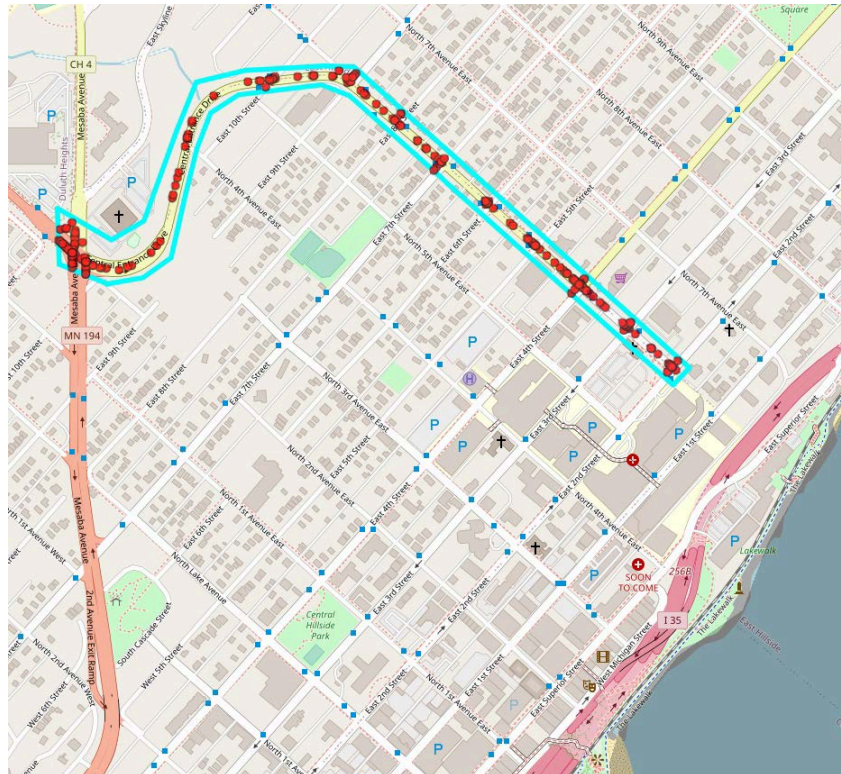


# Roadway Safety Benefits

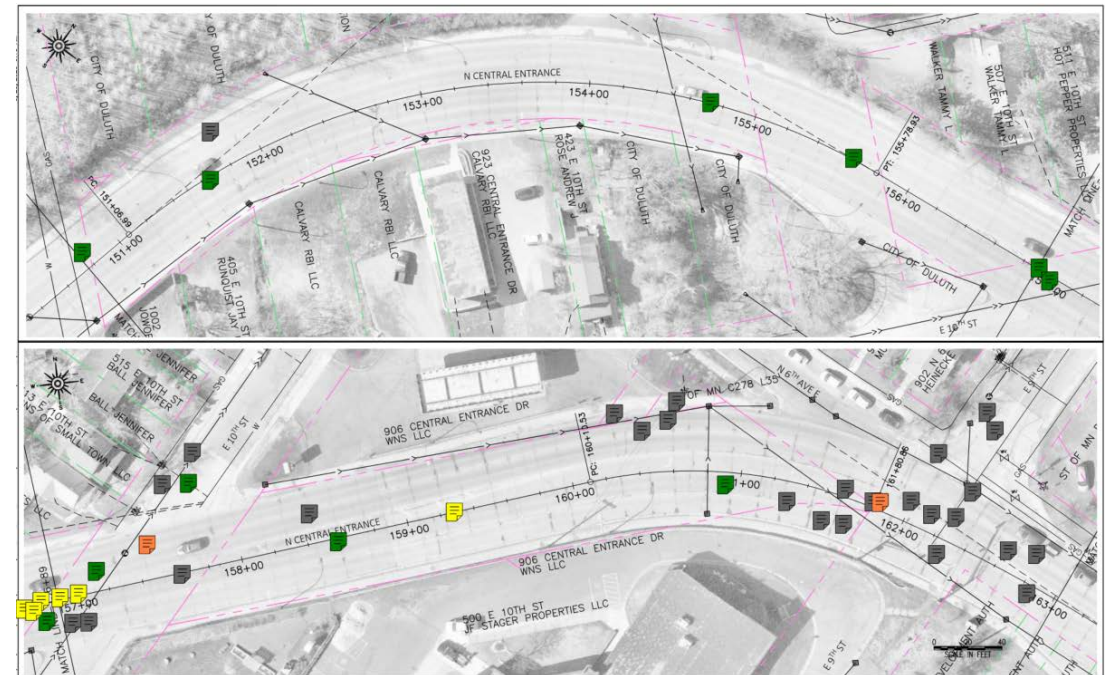


# 10-Year Crash Analysis

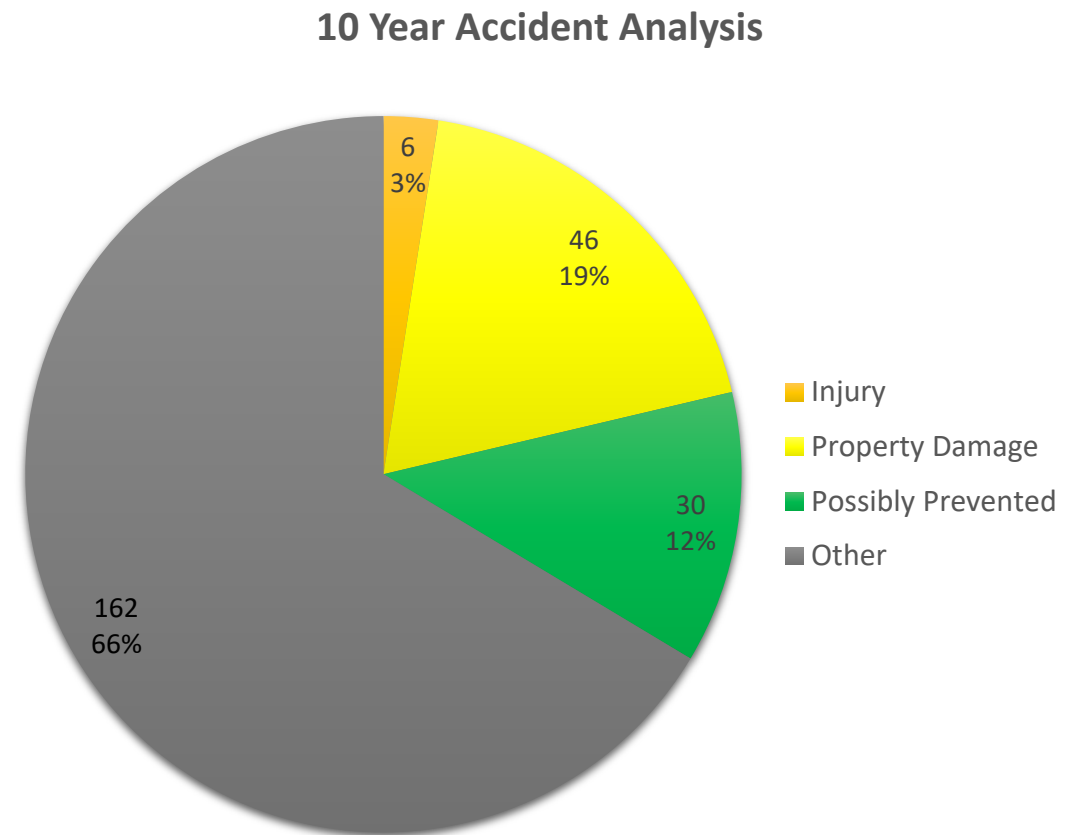
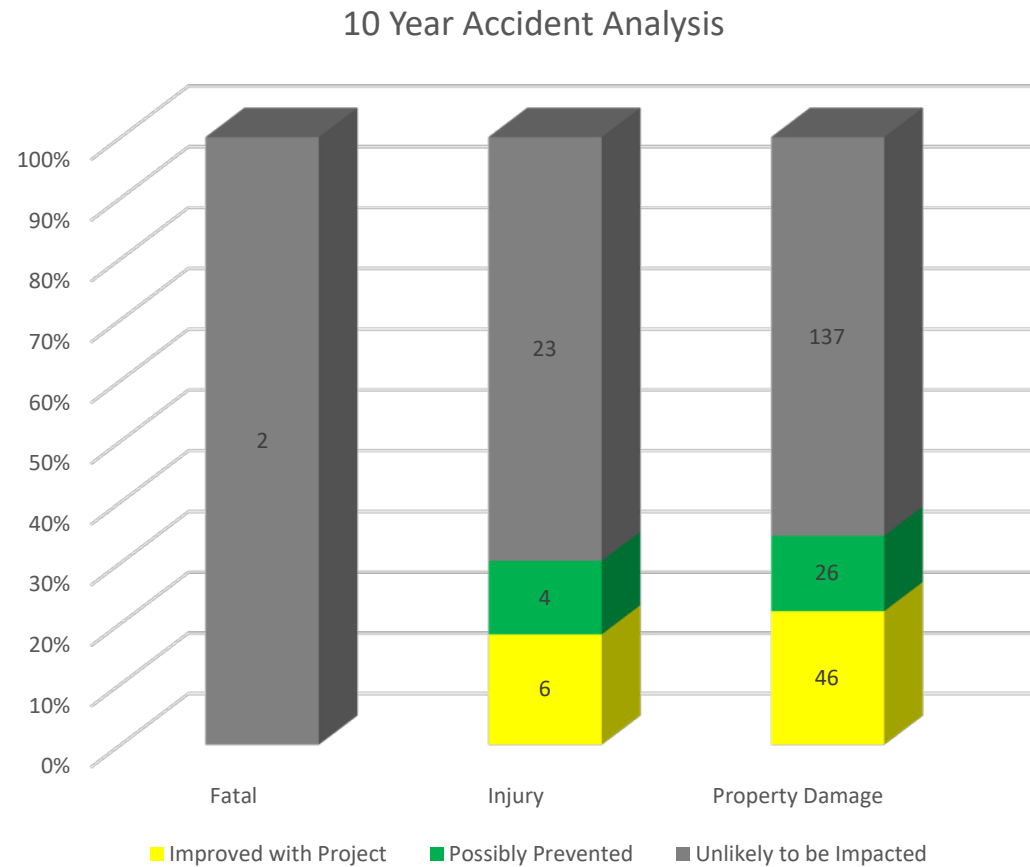
## Crash Locations



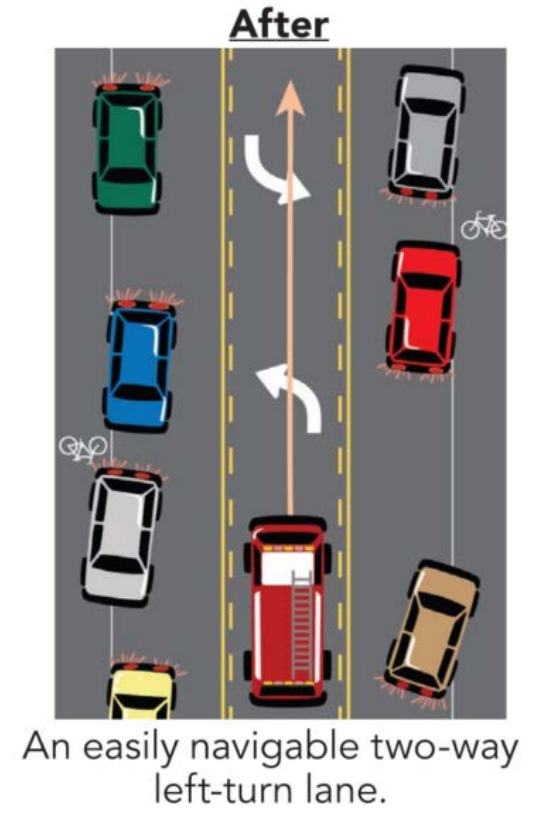
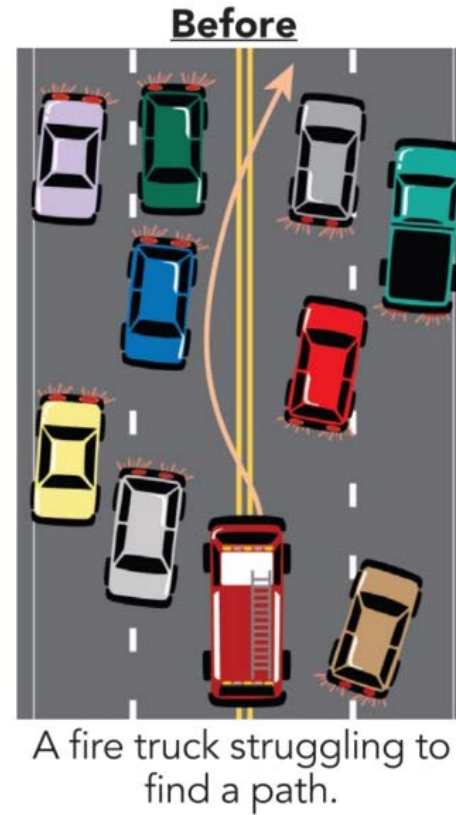
## Crash Mapping and Classification



# 10-Year Crash Analysis



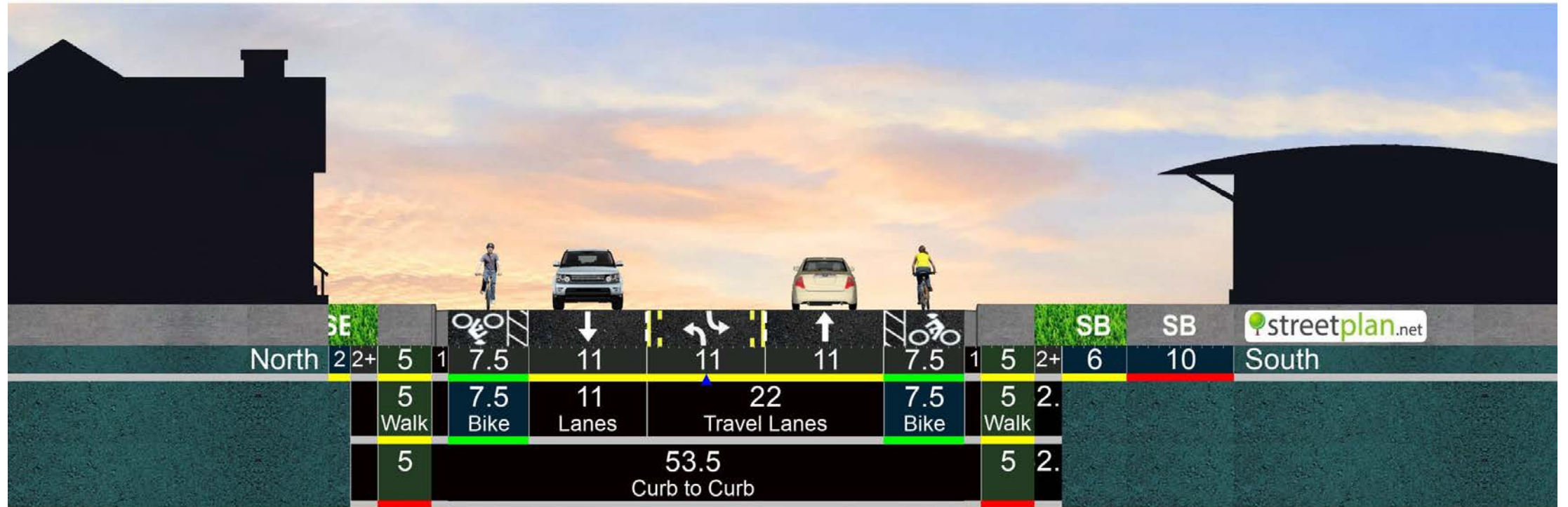
# Impacts to Emergency Response



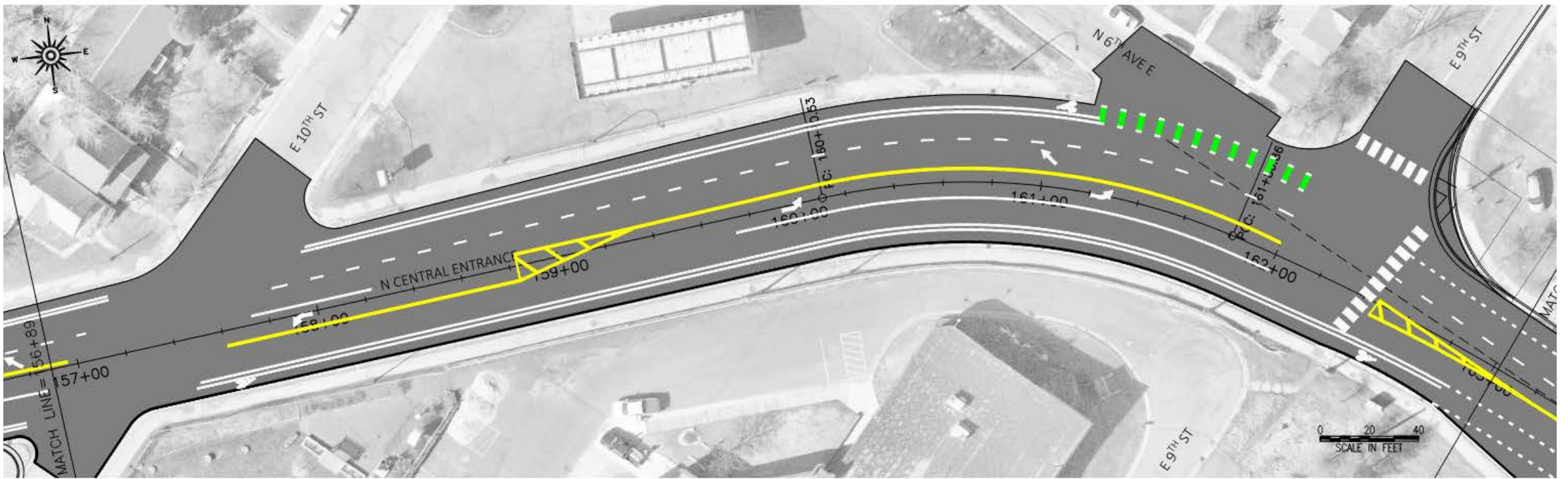


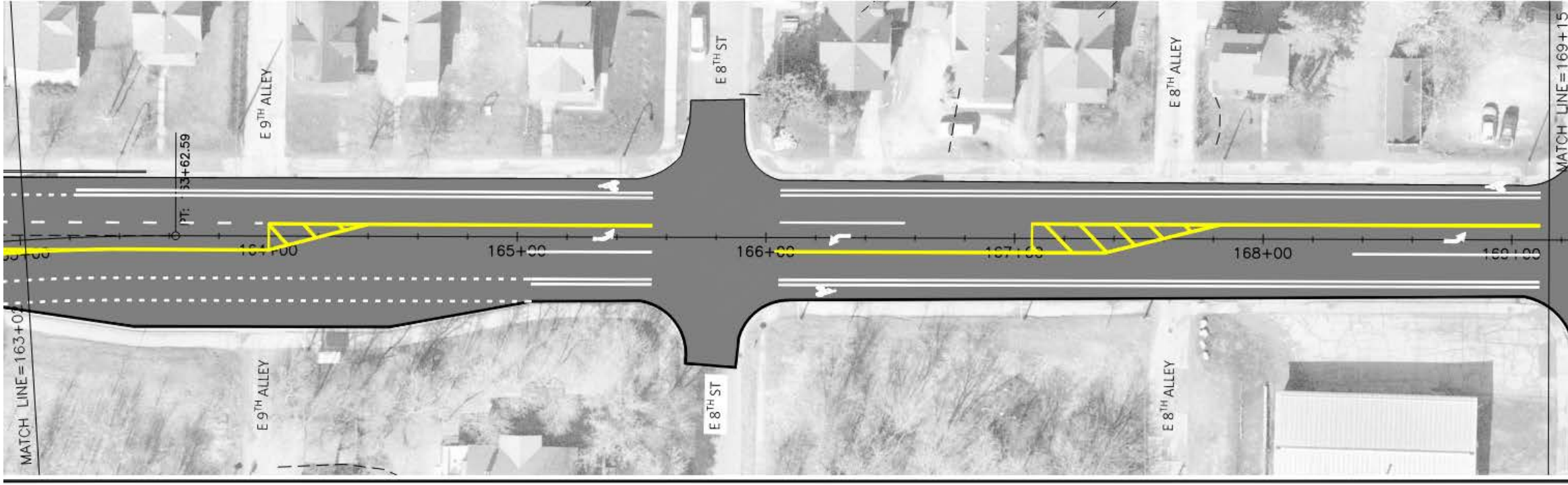
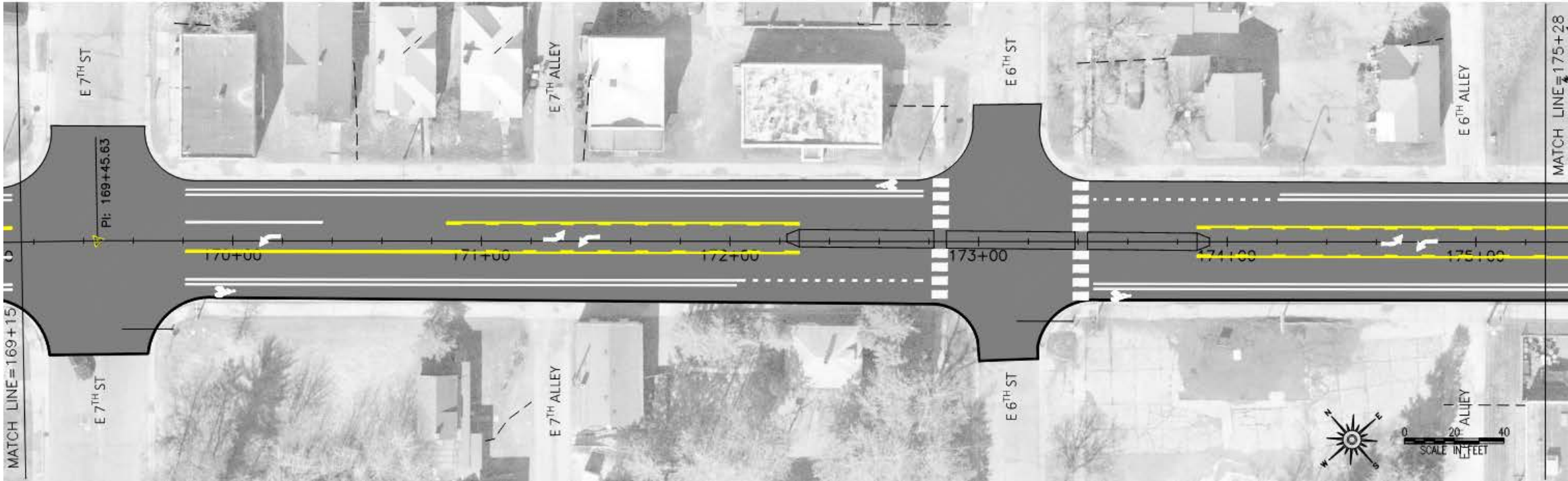
# Proposed Typical Sections

**6th Avenue E** Mesaba Ave to 2nd Street **Typical Striping** Right-of-Way: 66' of 66'

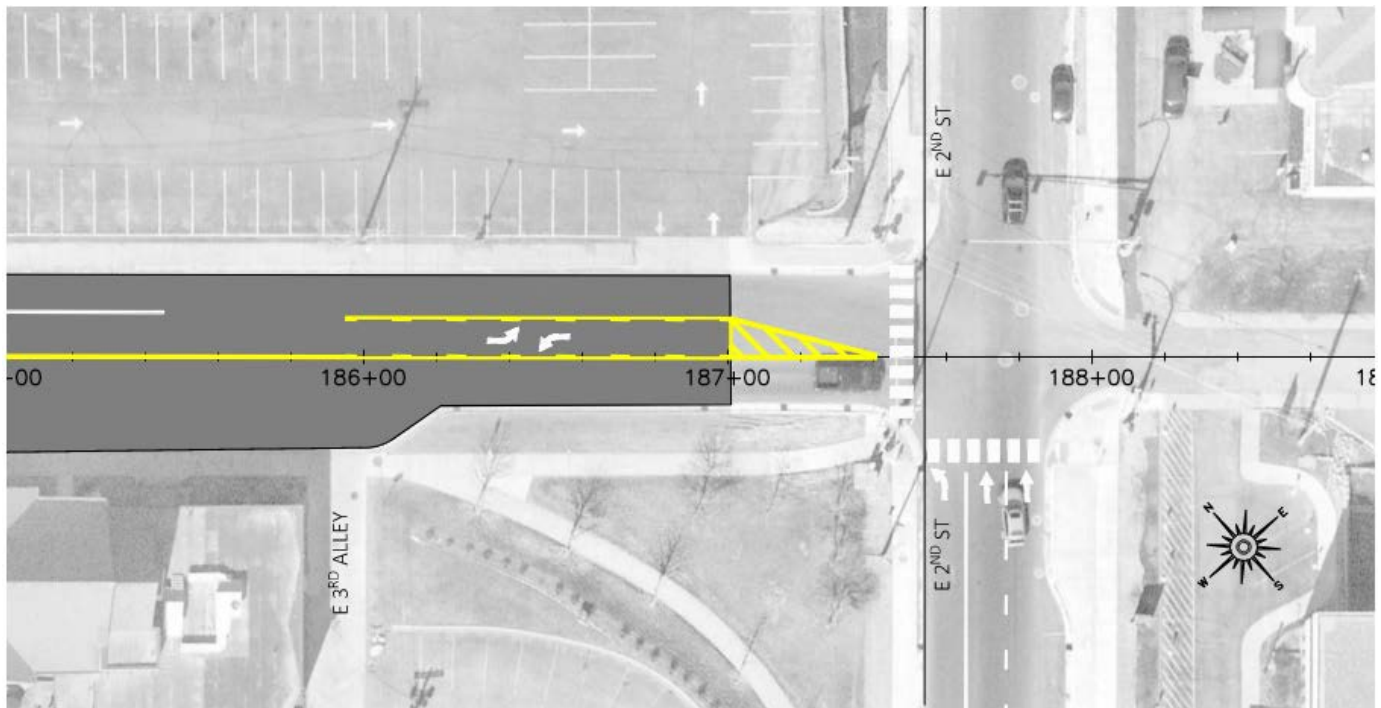












# Project Schedule

Fall 2023 – Spring 2024	2024	2025-29	2030+
Resurfacing Project Design	Resurface 6th Avenue East from 2 <sup>nd</sup> Street to Mesaba Avenue	Collect Public Input on Reconfiguration and Future Reconstruction Designs, Develop Reconstruction Plans	Earliest Possible Reconstruction

# Questions or Comments

6<sup>th</sup> Avenue East Overlay and Roadway Reconfiguration

